

Starter Kit/Reorder Kit

Sage Accpac ERP Starter Kit

- 250 Multi-Purpose Laser Checks
- **Color:** Blue
- 250 Self-Sealing Double Window Envelopes
- 1 Signature Stamp

Item #ACCSKIT

Your Price: \$127.95
(After 20% saving)

*Not included in Reorder Kit.

20% SAVINGS!



Sage Accpac ERP Reorder Kit

- 500 Multi-Purpose Laser Checks
- **Color:** Blue
- 500 Self-Sealing Double Window Envelopes
- 10% Savings

Item #ACCMKIT

Your Price: \$166.95
(After 10% savings)

Deposit Solutions

Manual Deposit Tickets

Comes complete with your company name, financial institution, and MICR encoding imprinted at no extra charge. Carbonless copies, book format. Size: 7 7/8" x 3 3/8"

Item	200	400	800	Add'l 200
DTA1—1 Part	\$27.95	40.95	61.95	11.00
DTA2—2 Parts	\$38.95	56.95	83.95	16.00
DTA3—3 Parts	\$49.95	72.95	108.95	20.00

Prices effective 03/09. Prices, colors, and quantities subject to change without notice.



Sage Payment Solutions

Maximize Productivity With Integrated Credit Card Processing!

Sage Payment Solutions integrates with Sage Accpac ERP and Sage Pro ERP software to provide a complete credit card processing solution. Integration helps eliminate duplicate data entry and allows you to capture all potential sales opportunities.

- Process transactions quickly and efficiently
- Improve customer service
- Maintain security

Exclusive Offer



PO Box 361109
Decatur, GA 30036-1109

Sage Accpac ERP
Sage Pro ERP

100% Compatibility and
Quality Guaranteed

Check 21 Compliant
Avoid Bank Penalties

Security Features Included
on All Checks, for Free

©2009 Sage Software, Inc. All rights reserved. Sage, the Sage logos, and the Sage product and service names mentioned herein are registered trademarks or trademarks of Sage Software, Inc. or its affiliated entities. All other trademarks are the property of their respective owners. B140000 06/09 09-17716

Sage Accpac ERP Sage Pro ERP

Multi-Purpose Checks

Accounts Payable
Checks

Payroll Checks

Invoices

Purchase Orders

Statements

Deposit Tickets

Envelopes

Stamps

Business Accessories

IRS-Approved Tax
Forms

Sage Payment
Solutions

**100%
Compatibility
Guaranteed***

Checks,
Envelopes, Supplies,
and Services

Our checks are ready
for Check 21, are you?



Nolo® products are stand-alone and are not dependent upon Sage products.



Business Forms and Accessories

Forms

Make a positive first impression with these classic forms. Laser and continuous forms are available.

- Invoices
- Statements
- Order Entry
- Purchase Orders
- Multi-Purpose

Tax Forms

We carry a full line of tax forms to meet your needs.

- IRS Approved
- 100% Sage Compatible*

**Payroll tax forms are 100 percent compatible when using the Sage Accpac Payroll Tax Update Service.*

Other Products Available

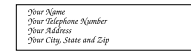
- Manual 3-On-A-Page Checks
- Blank Laser Check Stock
- MICR Toner Cartridges
- Deposit Bags
- Blank and Custom Mailing Labels
- Large Mailing Envelopes
- Convenience Stamps
- Nolo® Business Resource Tools
- Gift Card Program

And much more...

Pre-inked Stamps

Save time in a number of ways. Use stamps to endorse and sign checks, print return address or fax information, add logo, state messages, and more. These can be printed with 28 characters per line up to five lines. Design and color may vary. Available in Black, Blue, Red, Green, or Violet ink.

Price: \$22.95 each



Elegant Address S-5158



Monogram S-5159



Standard S-5160



Logo Stamp S-5165



Endorsement S-5169 (black ink only)

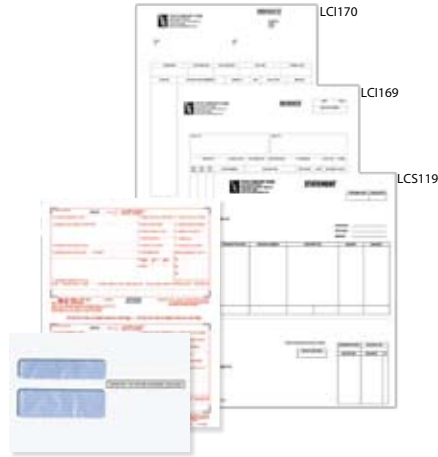


Message (create your own) S-5170

Signature Stamp

Provide camera-ready signature in black ink on white paper with your order.

Price: \$24.95 each
Item #S-5166



Sage Accpac ERP Checks

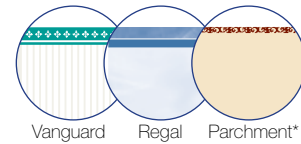
These checks provide flexibility. Use the same check stock for accounts payable, multi-purpose, or payroll. Open stub allows for detailed information.

Accounts Payable—LAP66

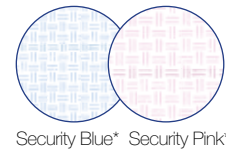
Multi-Purpose—LMP73

Payroll—LCP66

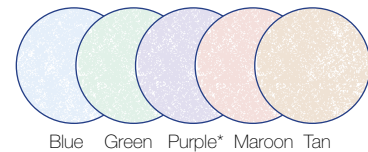
Professional Colors



Security Colors



Classic Colors



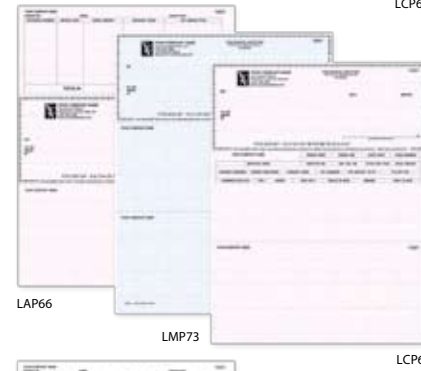
**Available in Laser format only.*

Continuous Formats (not ANSI compliant)

Available for most styles and colors. Call for assistance.

Item	250	500	1000	2000
Laser Checks: LAP66, LMP73, LCP66				
One Part	\$81.95	109.95	149.95	250.95
Double Window Envelopes				
CE37	\$42.95	59.95	91.95	161.95
Double Window Envelopes, Self-Seal				
CE37S	\$53.95	75.95	117.95	202.95

Prices effective 03/09. Prices, colors, and quantities subject to change without notice.



Don't forget compatible envelopes!

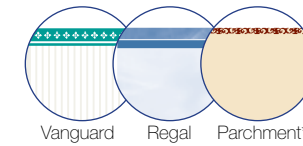
Sage Pro ERP Checks

Accounts Payable—LAP68

Multi-Purpose—LMP25

Payroll—LCP62

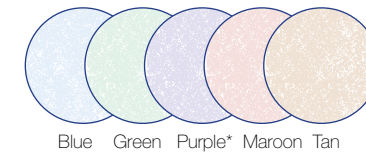
Professional Colors



Security Colors



Classic Colors



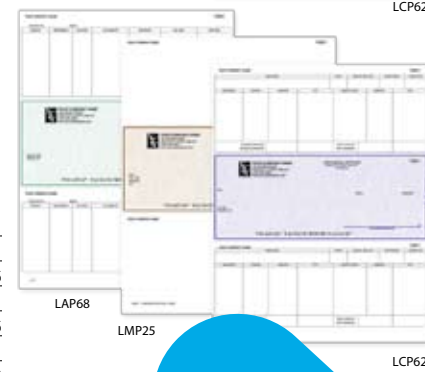
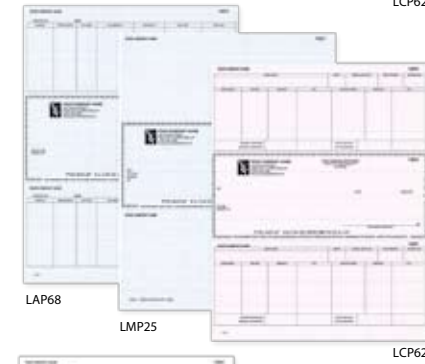
**Available in Laser format only.*

Continuous Formats (not ANSI compliant)

Available for most styles and colors. Call for assistance.

Item	250	500	1000	2000
Laser Checks: LAP68, LMP25, LCP62				
One Part	\$81.95	109.95	149.95	250.95
Double Window Envelopes				
CE05B	\$42.95	59.95	91.95	161.95
Double Window Envelopes, Self-Seal				
CE05BS	\$53.95	75.95	117.95	202.95

Prices effective 03/09. Prices, colors, and quantities subject to change without notice.



Customize your checks with a logo!

How to Order Checks, Forms, and Accessories

3 Easy Ways to Order

PHONE: (516) 338-9500 ext 174

FAX: (516) 338-8862

EMAIL: tinaa@exempt5.com

Select a Compatible Check or Form Layout

Find the check or form that will meet your needs using this catalog. Our forms are guaranteed to be compatible with your software.*

Choose Laser or Continuous Format

Choose laser format for laser or inkjet printers. Continuous format is available for dot-matrix or tractor-fed printers. Your Peachtree software supports both laser and continuous formats.

Choose Style, Parts and Color

Choose the style, parts, and check color (if applicable) to meet your business needs. Free samples are available—please call (516) 338-9500 ext 147

Satisfaction Guaranteed

If for any reason you are not completely satisfied with your order, return your purchase within 30 days of receipt for a full credit or refund, **100%** including shipping and handling.

Add Business Accessories

Order compatible envelopes and pre-inked stamps to save time. Imprinted deposit tickets are also available.

Other Decisions About Your Checks & Forms Order

How many checks?

What will the starting number be?

Do you want your personalization in an upgraded style?

Do you need your laser checks reverse numbered?

Do you want to print a logo on your checks?

Do you want one or two signature lines?

All the Peachtree business checks in this catalog already comply with Check 21 legislation.

1. Customer/Shipping Information

Please indicate street address for delivery.

Firm name _____
 Attention _____
 Address _____
 Floor, suite, or room _____
 City, State, and ZIP _____
 Daytime phone number (_____) _____
 Fax number (_____) _____
 Type of business _____ # of employees _____
 Software _____ Version _____
 Type of printer: Impact/Continuous Inkjet Laser MICR

2. Bill To (If different from shipping)

Firm name _____
 Attention _____
 Address _____
 Floor, suite, or room _____
 City, State, and ZIP _____
 Daytime phone number (_____) _____

3. Product Information

Order No.	Item No.	Description	Parts	Check Color	Qty.	Starting Check Number*	Type Style	Reverse Number Yes/No	Logo Information		Price
									Custom Logo Yes/No	Standard Logo	
Sample	PVPL-2	Payroll Laser Check	1	Regal	500	1001	D	No	No	RC XX	Sample
1											
2											
3											
4											

4. Imprint Information

For personalization of forms, single-window envelopes, and return address stamp, indicate up to 5 lines of information. (Please provide imprint information for additional items on a separate sheet. Personalization of check will be taken from sample voided check).

Order No. _____ (From Section 3 above)

5. Custom Logo Options

If no box is checked, your logo will be printed to fit the Double-Window Envelope.
 Yes, size my custom logo to fit the double-window envelope (window size 3 1/4" x 4/5").
 I don't plan to use the double-window envelope, so size my logo to the specified size I have submitted.
 Please include clean, black & white, camera-ready artwork of your custom logo.

6. Financial Institution Information

IMPORTANT! For mailed check orders, enclose a sample voided check. We will print checks as shown. Please indicate any changes on the face of the voided check. If you do not have a sample check, provide a Specification Sheet from your bank. For deposit slips and endorsement stamps, enclose a sample voided deposit slip. **For faxed check orders**, please copy (enlarge 200% if possible) a sample check on a separate sheet. Use detail or fine mode. Sorry, no faxed custom logos. Please help us avoid duplication by not mailing or re-faxing the same order.

Standard/Custom Logo Charge	
Order Subtotal	
Standard Shipping & Handling	
Optional Priority Shipping	
Order Total	
(Please add applicable state and local tax.) Sales Tax	
Grand Total	

7. Payment Information

Check or money order made payable to Sage Checks & Forms
 Direct Bank Draft
 Visa MasterCard American Express Discover Exp. Date
 Card Number
 Name on card _____
 Cardholder signature _____

8. Other Options

2nd signature line (checks only)
 Text over signature line (checks only)

*Starting check number default is 1001. If no check numbering is required, indicate none or Arabic only.
 Sage Checks & Forms offers two signature-required delivery options using approved carriers; expedited overnight with afternoon delivery and ground delivery.